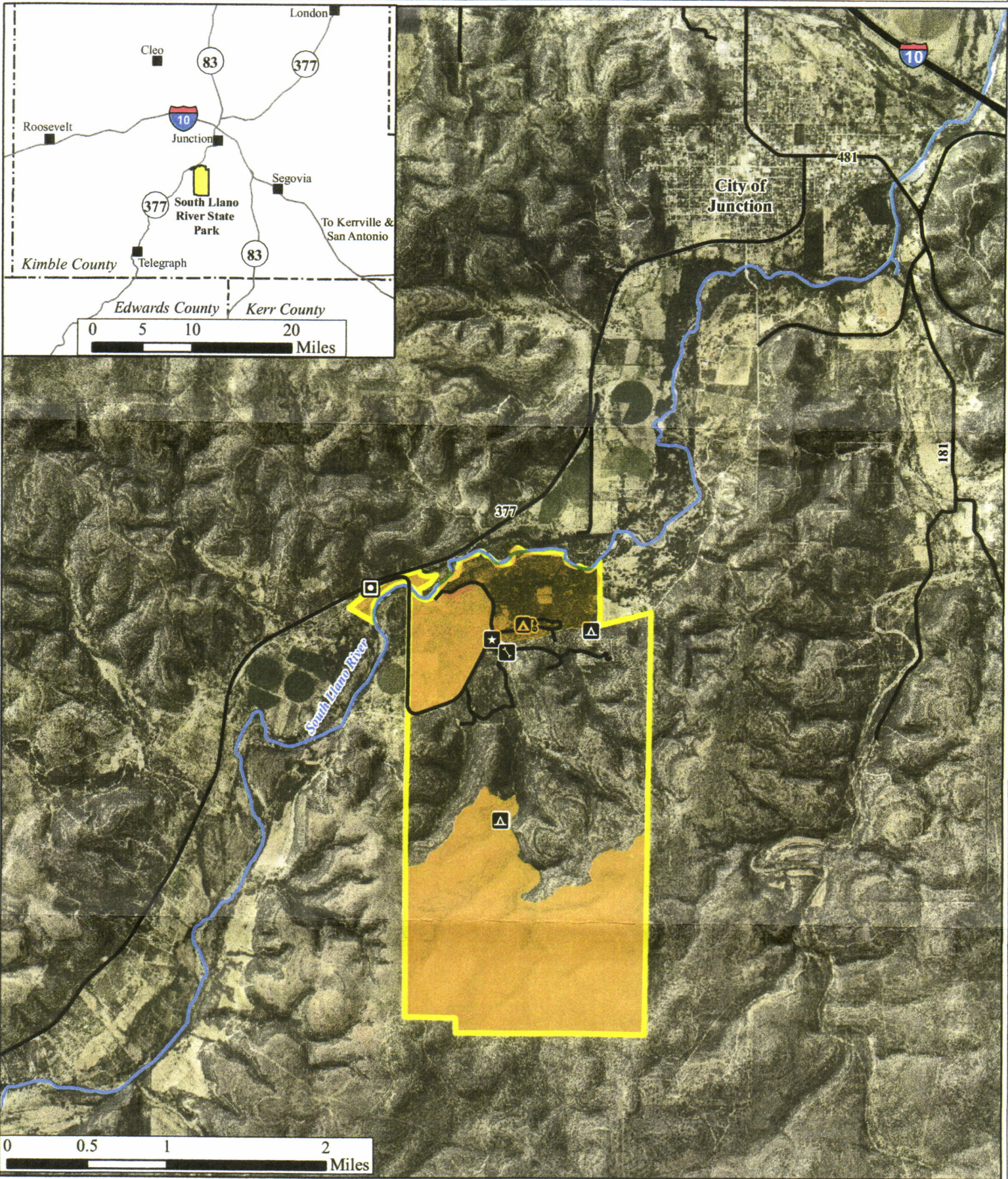
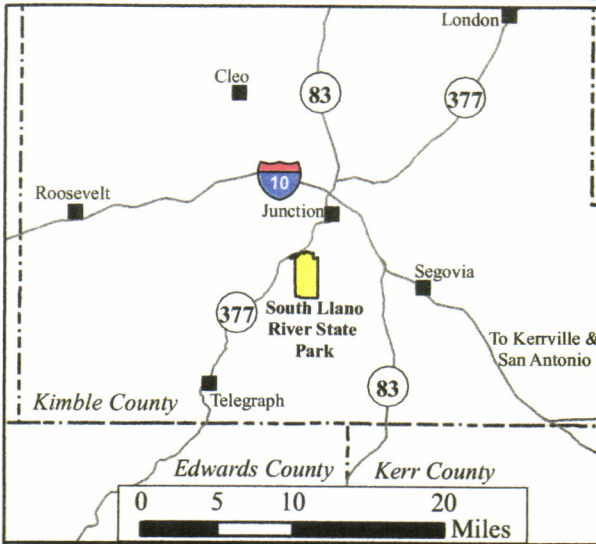


# South Llano SP, Kimble County: Prescribed Fire Notice - Fall 2024 - Spring 2025



- |                           |                                    |
|---------------------------|------------------------------------|
| Park Entrance             | Walk-In/Primitive Camping Area (2) |
| Park Headquarters         | Water & Electric Camping Area      |
| Park Maintenance Area (2) | South Llano River State Park       |
|                           | Proposed Prescribed Fire Area      |



MAP ID: South\_Llano\_RX\_PublicNotice\_FY2021  
 UTM NAD83 z14; imagery: NAIP 2014  
 TPWD:SP:NR:PGR:JEstes: 20200721  
 Pipeline data from Railroad Commission



Life's better outside.

Maps are for planning purposes only. No claims to accuracy are made or implied.